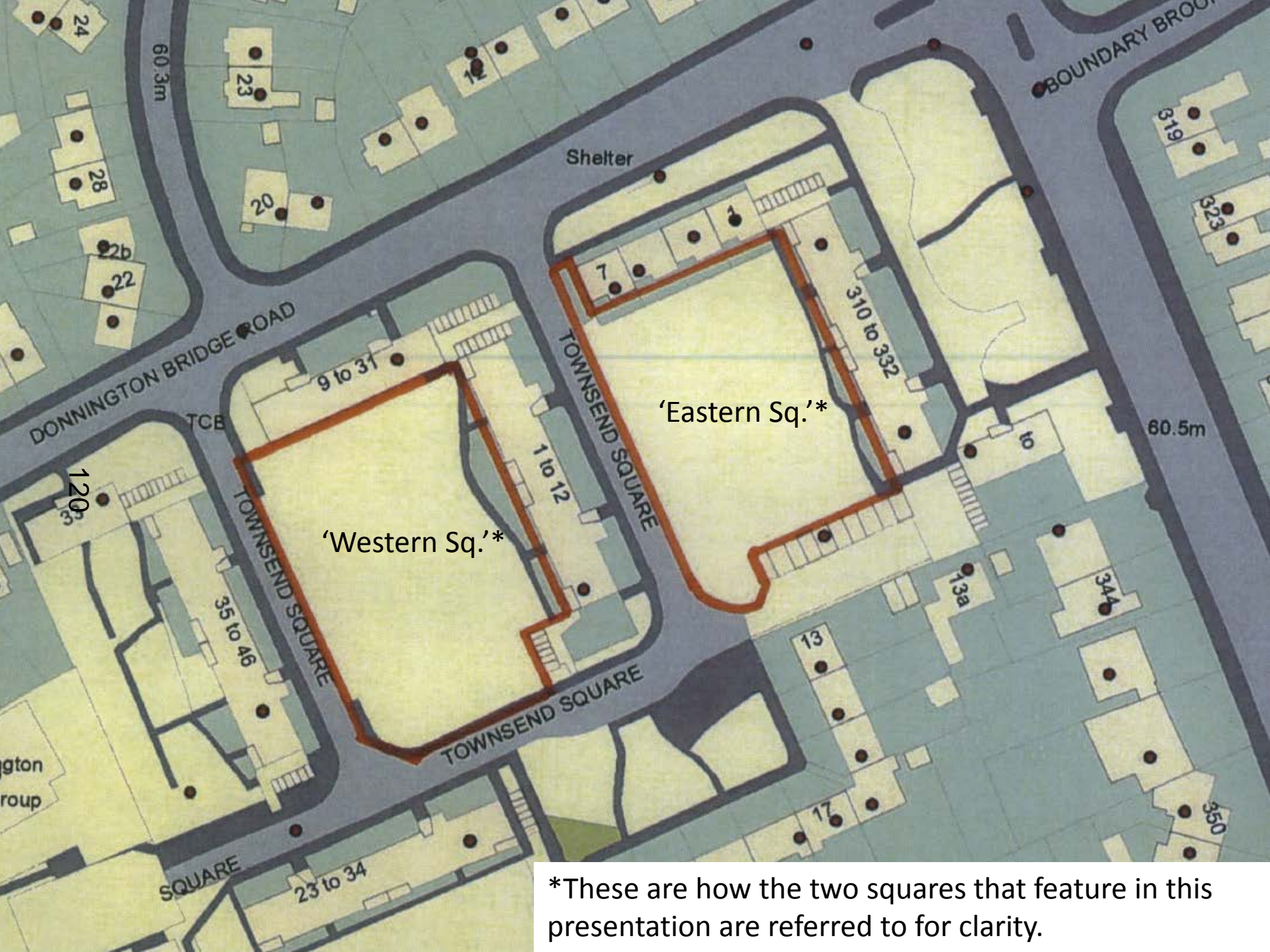


Welcome to the West Area Planning Committee

- This planning committee meeting is held in public but it is not a public meeting.
- There will be an opportunity for the public to address the committee on each application.
- 119 If you wish to speak for or against a planning application, you need to have either requested it in advance, or hand in one of the available speaker forms, or speak to the clerk.
- Information on meeting protocol and conduct at the committee is set out in the Code of Practice.
- This is in the committee agenda just before the first planning application report.



*These are how the two squares that feature in this presentation are referred to for clarity.

View towards
'western square' from
Donnington Bridge
Road (properties on
right hand side of
photo are 35-46
Townsend Sq)



View from south-west
corner of 'western
square' looking north
towards Donnington
Bridge Road





123

View from south-west corner of 'western square' looking north towards Donnington Bridge Road (properties on left are 35-46 Townsend Sq)



View from south-west corner of 'western square' looking across square towards the north-east (properties in distance are 1-12 Townsend Sq)



View from south-west corner of 'western square' looking east
(properties on right are 23-34 Townsend Sq)



View from south-west corner of 'eastern square' (single storey buildings in distance are 1-7 Donnington Bridge Rd)



View from south-west corner of 'eastern square' (single storey on the right are 1-7 Donnington Bridge Road, properties on left are 1-12 Townsend Square)

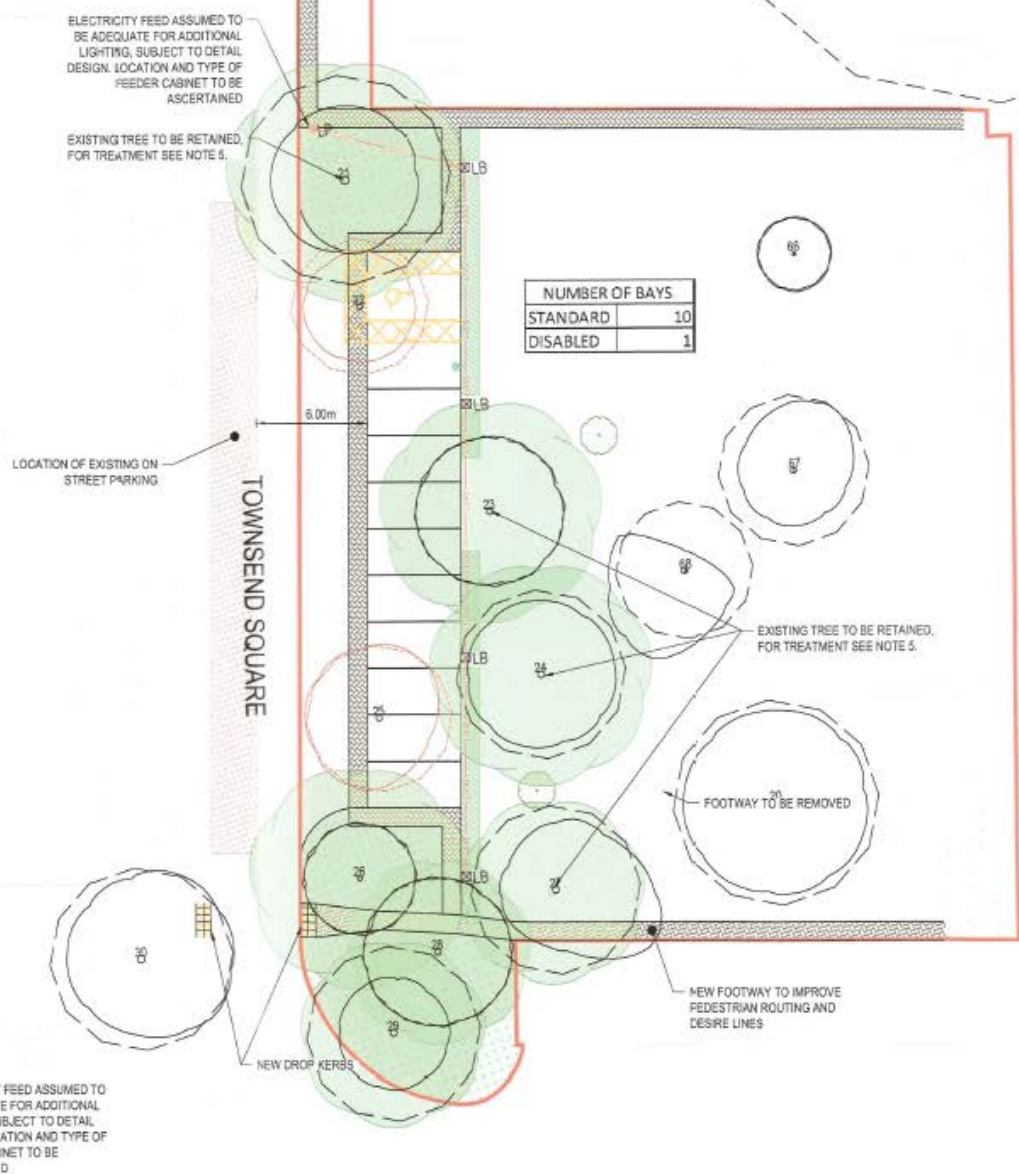
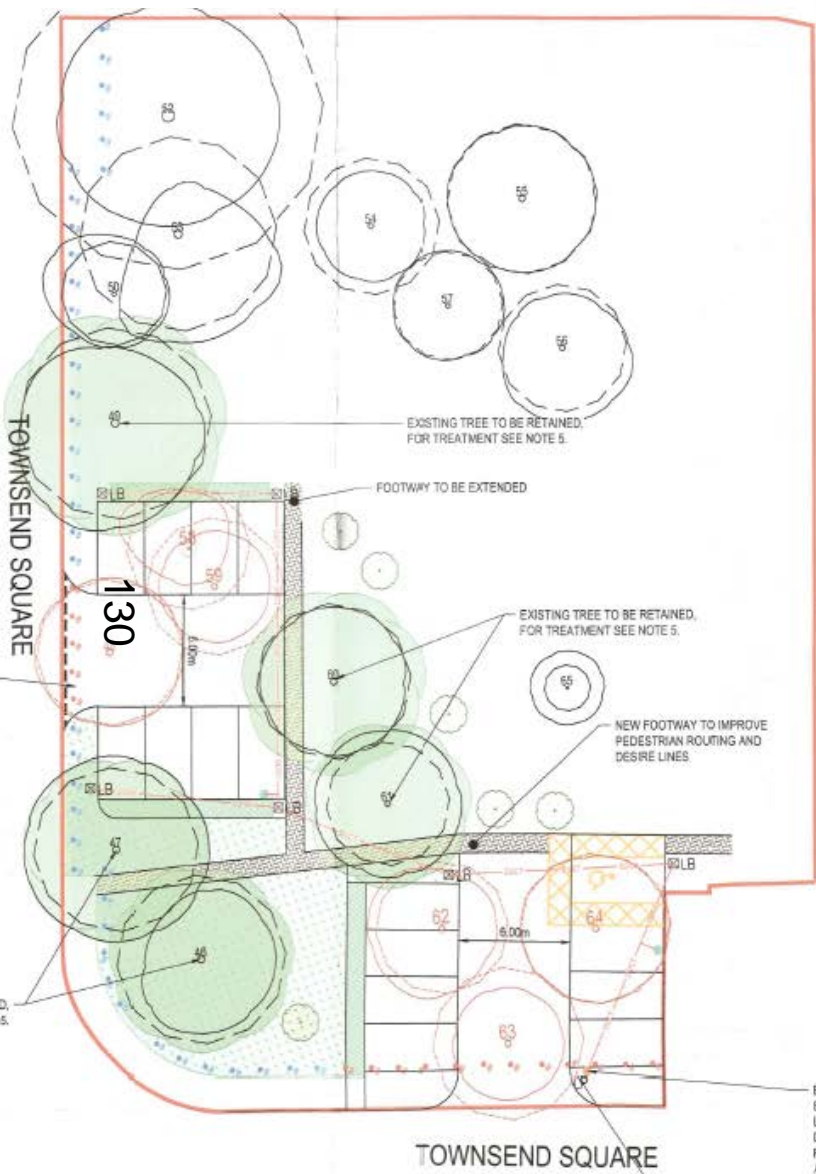


View of 'eastern square'. Properties on left hand side are 310-332 Townsend Square.

Topographical Survey of Existing Site



Proposed Parking Layout

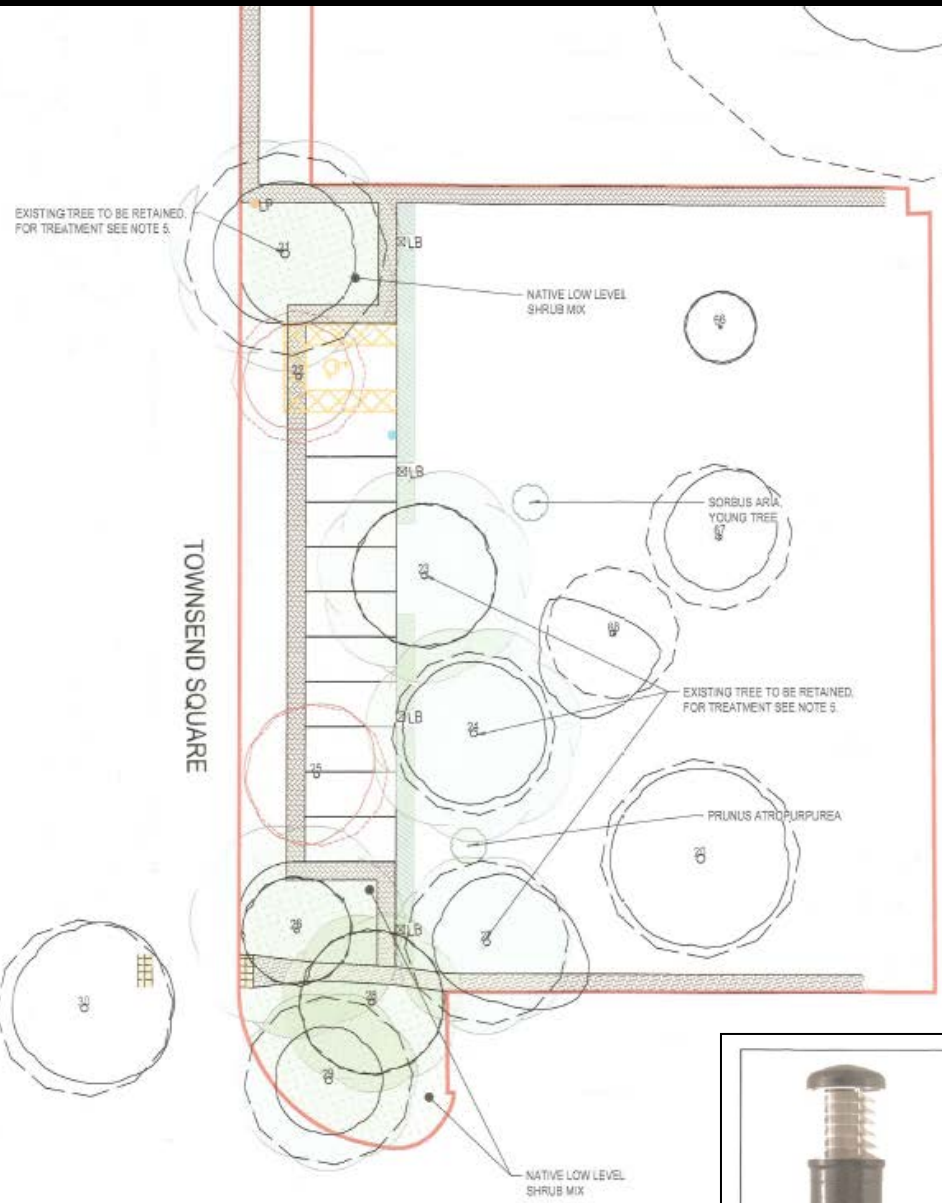
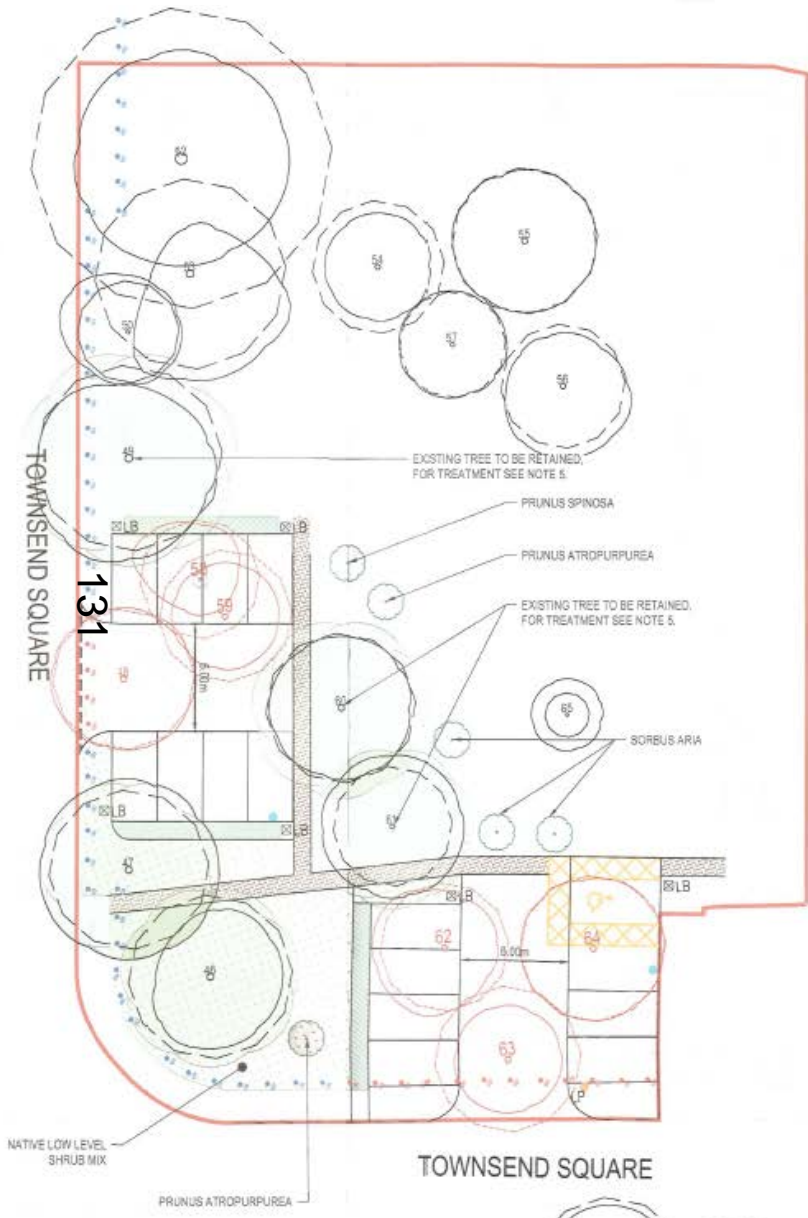


NUMBER OF BAYS	
STANDARD	10
DISABLED	1

TOWNSEND SQUARE

TOWNSEND SQUARE

Proposed Landscaping

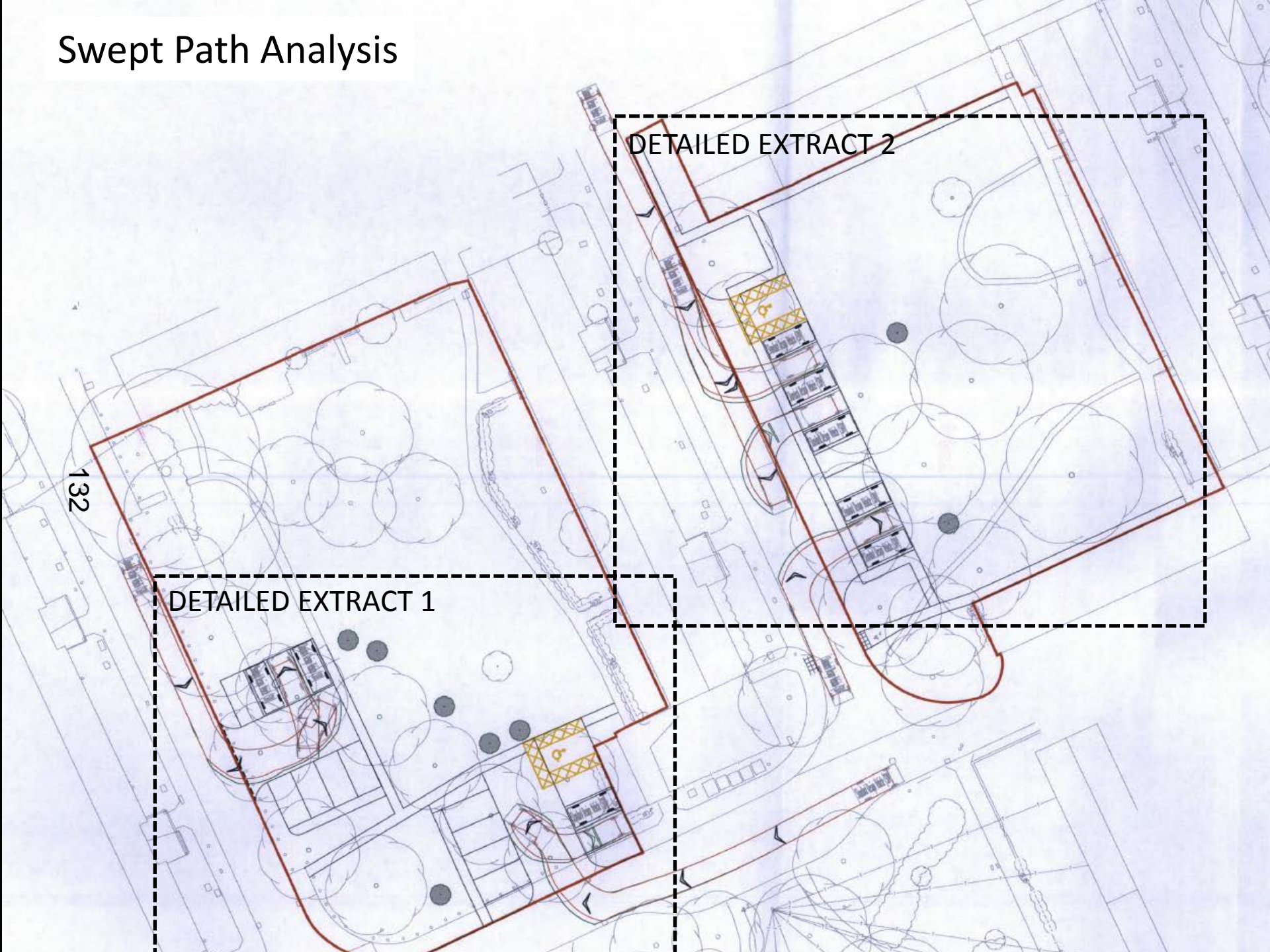


Swept Path Analysis

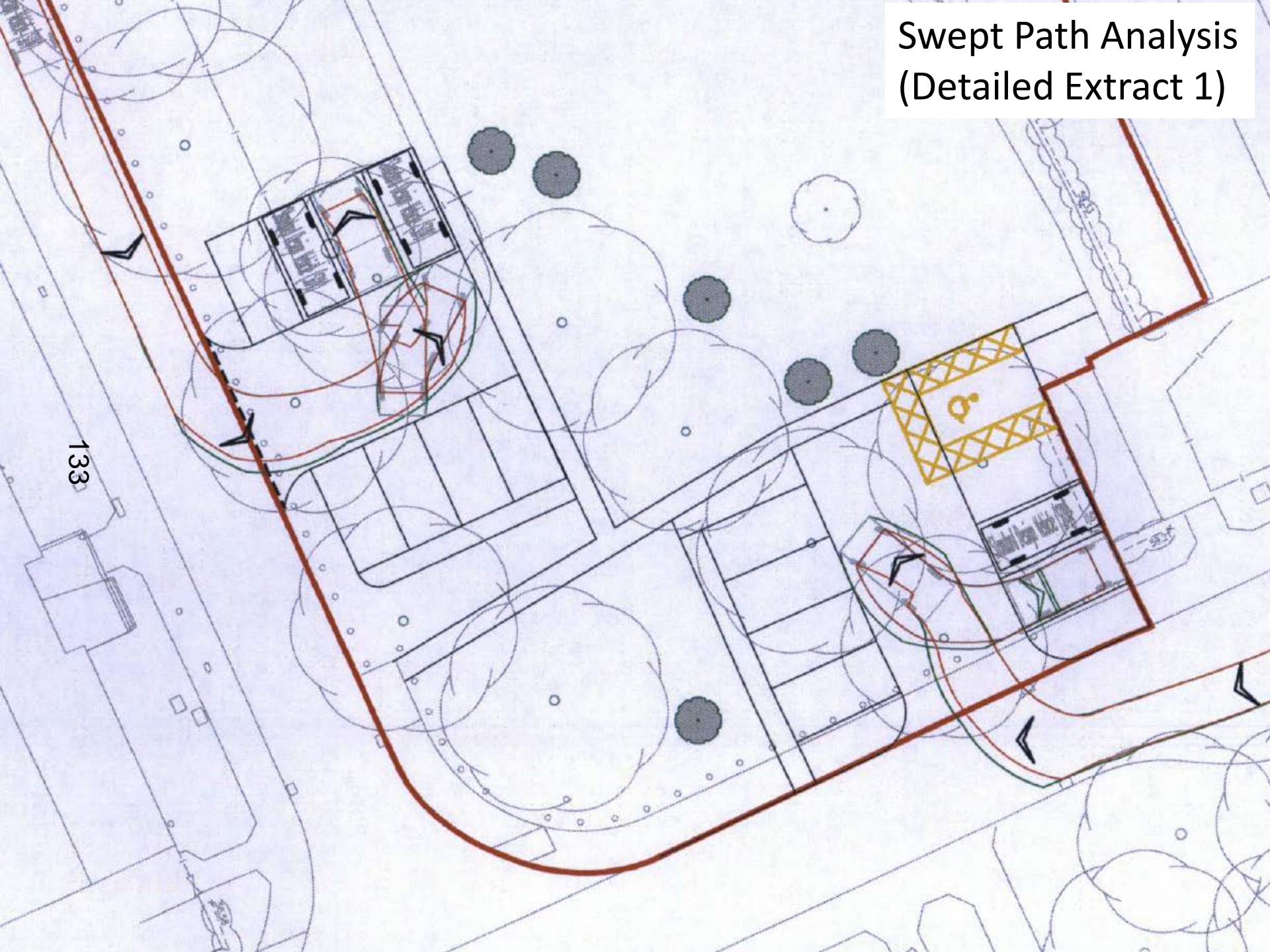
132

DETAILED EXTRACT 1

DETAILED EXTRACT 2

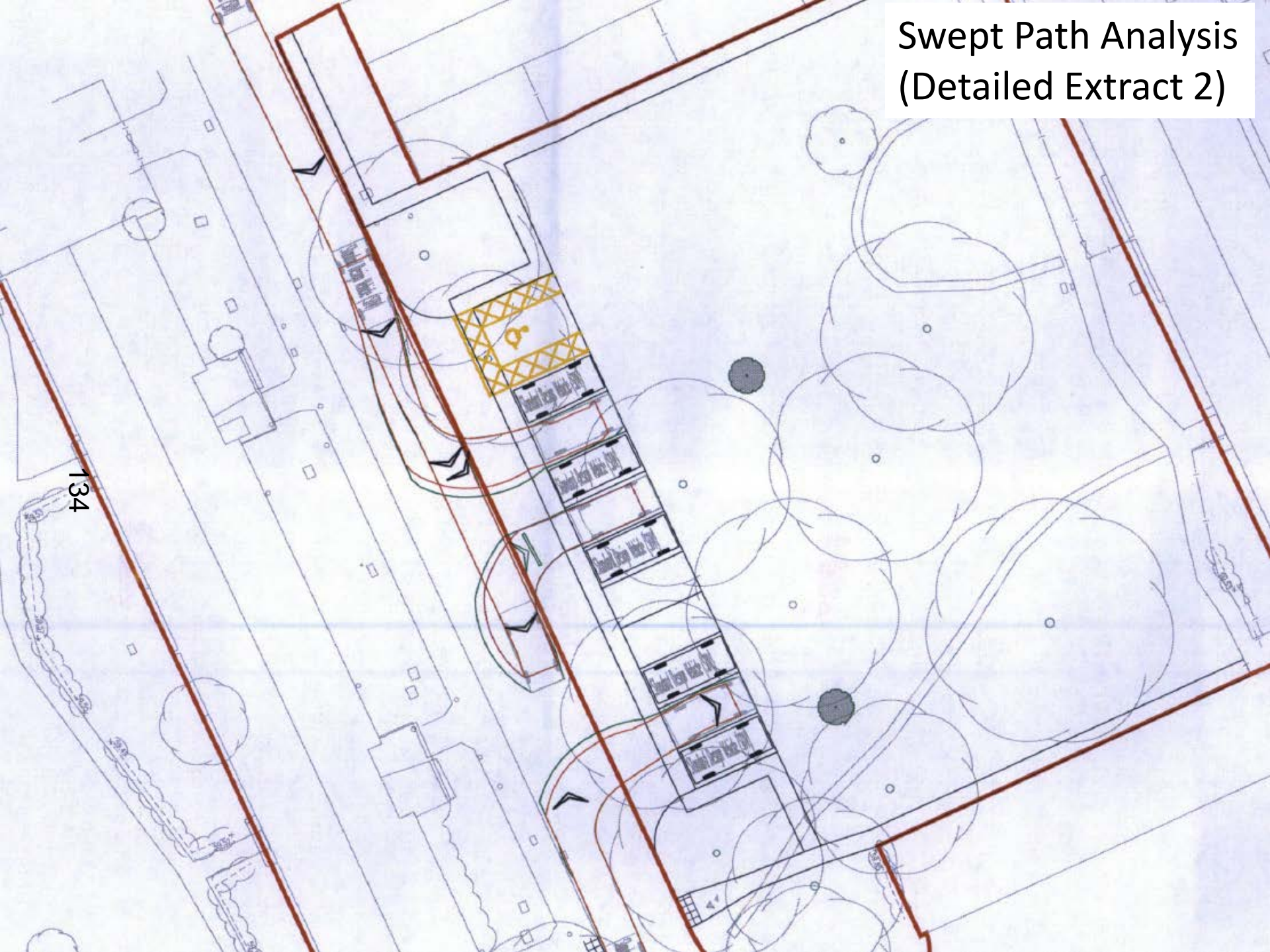


Swept Path Analysis (Detailed Extract 1)



133

Swept Path Analysis (Detailed Extract 2)



134

Recently Completed Resident Parking Scheme in Chatham Road



This page is intentionally left blank